

Providence St. Joseph Health

Providence St. Joseph Health Digital Commons

Articles, Abstracts, and Reports

4-1-2020

Does race impact functional outcomes in patients undergoing robotic partial nephrectomy?

Ugo G Falagario

Alberto Martini

John Pfail

Patrick-Julien Treacy

Kennedy E Okhawere

See next page for additional authors

Follow this and additional works at: <https://digitalcommons.psjhealth.org/publications>



Part of the [Surgery Commons](#), and the [Urology Commons](#)

Recommended Citation

Falagario, Ugo G; Martini, Alberto; Pfail, John; Treacy, Patrick-Julien; Okhawere, Kennedy E; Dayal, Bheesham D; Sfakianos, John P; Abaza, Ronney; Eun, Daniel D; Bhandari, Akshay; Porter, James R; Hemal, Ashok K; and Badani, Ketan K, "Does race impact functional outcomes in patients undergoing robotic partial nephrectomy?" (2020). *Articles, Abstracts, and Reports*. 3143.
<https://digitalcommons.psjhealth.org/publications/3143>

This Article is brought to you for free and open access by Providence St. Joseph Health Digital Commons. It has been accepted for inclusion in Articles, Abstracts, and Reports by an authorized administrator of Providence St. Joseph Health Digital Commons. For more information, please contact digitalcommons@providence.org.

Authors

Ugo G Falagario, Alberto Martini, John Pfail, Patrick-Julien Treacy, Kennedy E Okhawere, Bheesham D Dayal, John P Sfakianos, Ronney Abaza, Daniel D Eun, Akshay Bhandari, James R Porter, Ashok K Hemal, and Ketan K Badani



Does race impact functional outcomes in patients undergoing robotic partial nephrectomy?

Ugo G. Falagario^{1,2#}, Alberto Martini^{1,3#}, John Pfail¹, Patrick-Julien Treacy¹, Kennedy E. Okhawere¹, Bheesham D. Dayal¹, John P. Sfakianos¹, Ronney Abaza⁴, Daniel D. Eun⁵, Akshay Bhandari⁶, James R. Porter⁷, Ashok K. Hemal⁸, Ketan K. Badani¹

¹Department of Urology, Icahn School of Medicine at Mount Sinai, New York, NY, USA; ²Department of Urology, University of Foggia, Foggia, Italy; ³Department of Urology, Vita-Salute San Raffaele University, Milan, Italy; ⁴Robotic Urologic Surgery, Ohio Health Dublin Methodist Hospital, Columbus, OH, USA; ⁵Department of Urology, Temple University School of Medicine, Philadelphia, PA, USA; ⁶Division of Urology, Columbia University at Mount Sinai, Miami Beach, FL, USA; ⁷Swedish Urology Group, Seattle, WA, USA; ⁸Department of Urology, Wake Forest School of Medicine, Winston-Salem, NC, USA

Contributions: (I) Conception and design: A Martini, UG Falagario, KK Badani; (II) Administrative support: KE Okhawere, BD Dayal; (III) Provision of study material or patients: KK Badani, AK Hemal, JR Porter, A Bhandari, DD Eun, R Abaza; (IV) Collection and assembly of data: A Martini, UG Falagario, KE Okhawere, BD Dayal; (V) Data analysis and interpretation: A Martini, UG Falagario; (VI) Manuscript writing: All authors; (VII) Final approval of manuscript: All authors.

[#]These authors contributed equally to this work.

Correspondence to: Alberto Martini, MD. Department of Urology, Icahn School of Medicine at Mount Sinai, 1425 Madison Avenue, 6th Floor, New York City, NY 10029, USA. Email: a.martini.md@gmail.com; alberto.martini@mountsinai.org; Ketan K. Badani, MD. Department of Urology, Icahn School of Medicine at Mount Sinai, 1425 Madison Avenue, 6th Floor, New York City, NY, 10029, USA. Email: ketan.badani@mountsinai.org.

Background: The role of race on functional outcomes after robotic partial nephrectomy (RPN) is still a matter of debate. We aimed to evaluate the clinical and pathologic characteristics of African American (AA) and Caucasian patients who underwent RPN and analyzed the association between race and functional outcomes.

Methods: Data was obtained from a multi-institutional database of patients who underwent RPN in 6 institutions in the USA. We identified 999 patients with complete clinical data. Sixty-three patients (6.3%) were AA, and each patient was matched (1:3) to Caucasian patients by age at surgery, gender, Charlson Comorbidity Index (CCI) and renal score. Bivariate and multivariate logistic regression analyses were used to evaluate predictors of acute kidney injury (AKI). Kaplan-Meier method and multivariable semiparametric Cox regression analyses were performed to assess prevalence and predictors of significant eGFR reduction during follow-up.

Results: Overall, 252 patients were included. AA were more likely to have hypertension (58.7% *vs.* 35.4%, $P=0.001$), even after 1:3 match. Overall 42 patients (16.7%) developed AKI after surgery and 35 patients (13.9%) developed significant eGFR reduction between 3 and 15 months after RAPN. On multivariate analysis, AA race did not emerge as a significant factor for predicting AKI (OR 1.10, $P=0.8$). On Cox multivariable analysis, only AKI was found to be associated with significant eGFR reduction between 3 and 15 months after RAPN (HR 2.49, $P=0.019$).

Conclusions: Although African American patients were more likely to have hypertension, renal function outcomes of robotic partial nephrectomies were not significantly different when stratified by race. However, future studies with larger cohorts are necessary to validate these findings.

Keywords: Acute kidney injury (AKI); chronic kidney disease (CKD); functional outcome; partial nephrectomy

Submitted Aug 30, 2019. Accepted for publication Sep 17, 2019.

doi: 10.21037/tau.2019.09.31

View this article at: <http://dx.doi.org/10.21037/tau.2019.09.31>

Introduction

African Americans (AA) constitute about 12% of the USA population (1). It has been estimated that AA patients presenting with renal cell carcinoma (RCC) are more likely to present with localized disease as compared to Caucasians at diagnosis. However, prior studies have demonstrated that AA race is associated with worse survival outcomes (2-5). This fact may be attributed to differences in tumor biology (6), socioeconomic status or functional outcomes (7). Additionally, AA have a higher probability of developing chronic kidney disease (CKD) at a younger age relative to Caucasians and are also more likely to present with comorbidities such as diabetes and hypertension (8).

It is common knowledge that the blood pressure lowering efficacy of renin-angiotensin system (RAS) inhibitors is attenuated in African Americans. This is due to a higher prevalence of salt sensitivity, which is defined as an increase in blood pressure in response to sodium or salt intake and is commonly associated with a low circulating renin profile (9). Therefore, inhibitors of the RAS are often not recommended as initial antihypertensive therapy. The reasons behind this phenomenon have not been fully explored but may likely be linked to socioeconomic status, lifestyle choices, environmental, and biologic/genetic factors that may contribute broadly to racial/ethnic differences in outcomes, as well as in response to therapeutic intervention (10). Wilson *et al.* hypothesized that the slave trade from Africa to the Americas led to extreme volume depletion and cardiovascular collapse during the journey due to diarrheal diseases and limited access to water. These extreme conditions favored the survival of people who were avid sodium retainers and accelerated gene selection for sodium retention (11). Given this racial disparity and the implications of the kidney function after partial nephrectomy on the overall survival and cancer specific survival (12,13), we aimed to determine the functional outcomes of AA patients were undergoing RAPN.

Methods

Patient population

We retrospectively reviewed a multi-institutional database of 1,150 patients who underwent RAPN. Patients with missing data were excluded from the analysis [Charlson Comorbidity Index (CCI), n=17 and RENAL nephrometry score, n=134]. Overall, 999 patients were considered for further analyses. All patients were operated on by six expert

surgeons from six different institutions and had complete clinical, perioperative and relatively short-term outcome data. Overall, there were 63 AA patients (6.3%), who were matched (1:3) to Caucasians by age at surgery, gender, CCI and RENAL nephrometry score.

Outcomes and variable definitions

Estimated GFR was calculated according to the Chronic Kidney Disease Epidemiology Collaboration formula (14). To investigate kidney function after robot-assisted partial nephrectomy (RAPN), two outcomes were selected: (I) AKI defined according to the risk/injury/failure/loss/end-stage (RIFLE) criteria (>25% reduction in preoperative baseline eGFR or >1.5-fold increase in preoperative creatinine, both at discharge from hospital) (15) and (II) eGFR reduction of >25% from baseline between 3 and 15 months after RAPN. This eGFR threshold was chosen based on the National Institute for Health and Care Excellence guidelines for CKD (16). Covariates included in the analyses included age, race, gender, BMI, diabetes and hypertension, CCI, baseline eGFR, RENAL nephrometry score and ischemia time.

Statistical analysis

Descriptive statistics were performed to determine the distribution of the overall population stratified by race. Continuous variables were reported as median and interquartile range and compared by the Kruskal-Wallis test. Categorical variables were reported as frequencies and percentages and were compared using Fisher's exact test or chi-square test, as appropriate.

We performed univariable and multivariable analyses to evaluate predictors of AKI.

The incidence rate of significant eGFR reduction in AA and Caucasian patients was estimated nonparametrically using the Kaplan-Meier method. Finally, multivariable semiparametric Cox regression analyses were performed to assess predictors of significant eGFR reduction during follow-up. Statistical analyses were conducted using R (for matching patients) and Stata 14 (for all other analyses). An α level of 0.05 was used for evaluating statistical significance.

Results

Population characteristics

Descriptive characteristics of 252 patients included for

Table 1 Descriptive characteristics of the 252 patients who underwent robot assisted partial nephrectomy

Variable	Overall (N=252)	Caucasian (N=189)	African American (N=63)	P value
Age, yr	59.5 (51.0, 66.5)	60.0 (51.0, 66.0)	58.0 (50.0, 67.0)	0.8
Sex, n				
Female	133 (52.8%)	101 (53.4%)	32 (50.8%)	0.7
Male	119 (47.2%)	88 (46.6%)	31 (49.2%)	
BMI, kg/m ²	29.4 (25.6, 34.6)	29.4 (25.3, 34.8)	29.4 (26.4, 34.4)	0.8
Hypertension, n				
No	148 (58.7%)	122 (64.6%)	26 (41.3%)	0.001
Yes	104 (41.3%)	67 (35.4%)	37 (58.7%)	
Diabetes, n				
No	202 (80.2%)	155 (82.0%)	47 (74.6%)	0.2
Yes	50 (19.8%)	34 (18.0%)	16 (25.4%)	
CCI, n				
0	140 (55.6%)	105 (55.6%)	35 (55.6%)	1
1	56 (22.2%)	42 (22.2%)	14 (22.2%)	
2	35 (13.9%)	26 (13.8%)	9 (14.3%)	
3	21 (8.3%)	16 (8.5%)	5 (7.9%)	
Baseline eGFR mL/min/1.73 m ²	82.2 (65.2, 96.1)	81.9 (65.7, 95.8)	82.7 (62.7, 101.1)	0.5
GFR category, n				
G1	92 (36.5%)	68 (36.0%)	24 (38.1%)	0.8
G2	112 (44.4%)	88 (46.6%)	24 (38.1%)	
G3a	35 (13.9%)	24 (12.7%)	11 (17.5%)	
G3b	10 (4.0%)	7 (3.7%)	3 (4.8%)	
G4	3 (1.2%)	2 (1.1%)	1 (1.6%)	
RENAL score	7.0 (5.5, 9.0)	7.0 (5.0, 9.0)	7.0 (6.0, 9.0)	0.9
Ischemia time, min	15.0 (11.9, 21.0)	15.0 (11.5, 20.0)	15.6 (12.0, 21.0)	0.8
AKI, n				
No	210 (83.3%)	160 (84.7%)	50 (79.4%)	0.3
Yes	42 (16.7%)	29 (15.3%)	13 (20.6%)	

Medians (interquartile range) or frequencies (proportions) are displayed for continuous and categorical variables, respectively. AKI, acute kidney injury.

analysis are shown in *Table 1*. There were no significant differences between AA and Caucasians in age at surgery, gender, body mass index, CCI, baseline eGFR, CKD stage based on eGFR, RENAL nephrometry score, ischemia time and AKI. However, AA were more likely to have hypertension (58.7% vs. 35.4%, P=0.001).

Functional outcomes

Overall 42 patients (16.7%) developed AKI after surgery and 35 patients (13.9%) developed significant eGFR reduction between 3 and 15 months after RAPN. Median follow-up of patients who did not develop significant eGFR

Table 2 Univariable and multivariable logistic regression predicting AKI after robot-assisted partial nephrectomy

Covariate	Univariable analyses			Multivariable analysis		
	OR	95% CI	P value	OR	95% CI	P value
Age	1.01	0.98, 1.05	0.344			
Sex						
Female	1	Ref.				
Male	0.72	0.37, 1.41	0.339			
Race						
Caucasian						
African American	1.43	0.69, 2.97	0.331	1.10	0.50, 2.40	0.809
BMI	1.02	0.97, 1.07	0.453			
Hypertension						
No	1	Ref.		1	Ref.	
Yes	2.44	1.24, 4.80	0.010	2.55	1.13, 5.73	0.024
Diabetes						
No	1	Ref.		1	Ref.	
Yes	2.78	1.34, 5.75	0.006	1.93	0.85, 4.41	0.117
Baseline eGFR	1.01	0.99, 1.03	0.252			
RENAL score	1.09	0.91, 1.31	0.325			
Ischemia time	1.05	1.01, 1.10	0.016	1.07	1.02, 1.12	0.003

reduction was 12.35 months. Univariable and multivariable logistic regression predicting AKI after RAPN are shown in *Table 2*. In the univariable analyses, only hypertension (OR =2.44, P=0.010), diabetes (OR =2.78, P=0.006), and ischemia time (OR =1.05, P=0.016) were found to be predictors of AKI. After adjusting for these covariates in multivariate analysis, AA race did not emerge as a significant factor for predicting AKI (OR 1.10, P=0.8). Rates of significant eGFR reduction between 3 and 15 months after RAPN are shown in *Figure 1*. There was no significant difference between African Americans and Caucasians (P=0.9).

The role of race, AKI, diabetes, and hypertension were investigated using multivariable Cox regression analyses, and only AKI was found to be associated with significant eGFR reduction between 3 and 15 months after RAPN (HR 2.49, P=0.019) (*Table 3*).

Discussion

In the last decade, there has been a paradigm shift towards a more conservative approach for the treatment of small

kidney tumors. Partial nephrectomy, by means of the open or the robotic approach, currently represents the standard of care treatment for T1 renal cancer. African American patients are reportedly more likely to be diagnosed earlier with localized RCC as compared to Caucasians. However, they paradoxically tend to have worse prognosis in terms of functional and oncological outcomes. This may partly be attributed to differences in tumor biology (6,17), socioeconomic status or functional outcomes (12,13). Since several studies have shown that functional outcomes and kidney function after partial nephrectomy impacts overall and cancer specific survival, we aimed to compare functional outcomes between African American and Caucasian patients. After matching the two populations for comorbidities and anatomy and dissection complexity, we found that African Americans have similar risk of AKI after surgery and significant eGFR reduction within 3 and 15 months of follow-up.

Kara *et al.* reported similar results showing no significant differences in the median percentage of eGFR preservation at one-year follow-up in 84 AA patients undergoing RPN (18).

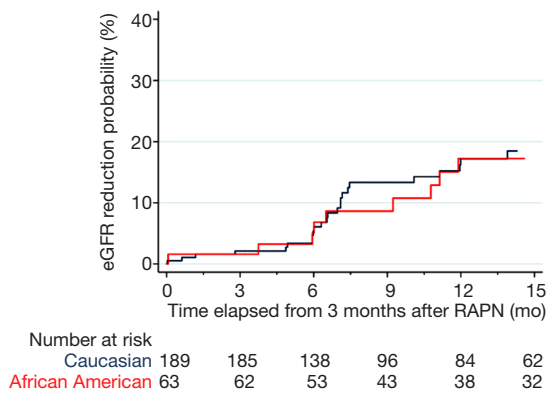


Figure 1 Kaplan-Meier failure function showing significant eGFR reduction probability after robotic assisted partial nephrectomy (RAPN) between 3 and 15 months of follow-up. The log-rank test did not demonstrate a significant difference between Caucasian and African American.

Table 3 Multivariable Cox regression analyses predicting significant eGFR reduction between 3 and 15 months after robot-assisted partial nephrectomy

Covariate	OR	95% CI	P value
Race			
Caucasian	1	Ref.	
African American	0.61	0.28, 1.32	0.207
AKI			
No	1	Ref.	
Yes	2.49	1.16, 5.36	0.019
Diabetes			
No	1	Ref.	
Yes	1.40	0.63, 3.08	0.407
Hypertension			
No	1	Ref.	
Yes	2.00	0.91, 4.40	0.084
Ischemia time	0.99	0.95, 1.04	0.700

However, these results may be limited by the methods used as the authors performed a matched-paired analysis of AA and Caucasians by age, preoperative eGFR and R.E.N.A.L score comparing median percentage of eGFR preservation at one-year follow-up. To control for this in our study, we performed a multivariable semiparametric Cox regression analyses to predict a time dependent outcome.

Moreover, we were able to take into account several known confounders such as ischemia time, AKI and hypertension which have been found to be significant predictors of worse functional outcomes (19-21).

Conflicting results are reported by Wang *et al.*, who found a significantly higher increase in serum creatinine at discharge among 105 AA patients who underwent RPN (0.44 vs. 0.33 mg/dL, P<0.001) (22). However, the author did not take into account that AA patients were significantly more likely to be affected by diabetes and hypertension. Adjusting for these comorbidities, we found no major differences in the risk of developing AKI after surgery.

If the results of our findings are confirmed by future larger studies, racial disparities in survival outcomes of RCCs should be investigated with respect to differences in socioeconomic status and treatment or differences in tumor biology. Previous reports suggest that factors including a higher prevalence of hypertension, smoking, alcohol use and lack of access to care underlie this survival disparity (4,5,23).

Tripathi *et al.* examined survival rates of African Americans and Caucasians who were diagnosed with metastatic kidney cancer and enrolled in clinical trials. Randomizing the population minimized bias towards access to care, compliance, and performance status. However, AA patients continued to have a 44% greater risk of death when compared with Caucasian patients with metastatic RCC (24). The reasons for the differences in outcome are unknown but variations in pathologic, genetic and immunologic tumor characteristics may play a relevant role. Molecular alterations commonly associated with better prognosis of RCC have been found to be less prevalent in the African American population. AA patients with clear cell RCC have less frequent VHL inactivation and have decreased up-regulation of HIF-associated gene signatures than white patients. These genomic differences would predict decreased responsiveness to VEGF-targeted therapy and are a biologically plausible contributing factor to the worse survival of AA patients with clear cell RCC (17). Distinct tumor biology with differential expression patterns were also observed in AA patients with papillary RCC (6). To the best of our knowledge, this is the first multi-center study comparing African American and Caucasian risk of developing AKI and significant eGFR reduction after RAPN.

The relationship found between eGFR and overall survival, specifically cancer specific mortality, indicates that renal function has an oncological role in patient survival

following surgery for RCC. However, the present study demonstrates that similar perioperative and intermediate term renal function outcomes are achieved in African American and Caucasian patients following RPN, even after accounting for the presence of hypertension and diabetes.

Limitations to this study include the relatively small sample size, the retrospective nature of the study, and the fact that these surgeries were performed by different urologists, which may introduce variability among patient outcomes.

Conclusions

Our results, which are based on a matched analysis of African American and Caucasian patients who underwent RAPN, showed that African American patients tend to have similar functional outcomes, in terms of AKI and significant eGFR reduction, to Caucasian patients after RAPN. As the current study has a relatively small sample size, future larger studies are needed to validate our findings.

Acknowledgments

Funding: None.

Footnote

Provenance and Peer Review: This article was commissioned by the Guest Editor (Ashok K. Hemal) for the series “Robotic-assisted Urologic Surgery” published in *Translational Andrology and Urology*. The article was sent for external peer review organized by the Guest Editor and the editorial office.

Conflicts of Interest: The series “Robotic-assisted Urologic Surgery” was commissioned by the editorial office without any funding or sponsorship. AKH served as the unpaid Guest Editor of the series and serves as the unpaid editorial board member of *Translational Andrology and Urology* from May 2019 to Apr 2021. DDE: Intuitive Surgical (educational support/honoraria) and Conmed (research grant) – Ronney Abaza; Intuitive Surgical (speaker and consultant), Conmed (research grant), CSATs (consultant advisory board), Ceevra (advisory board) – James Porter; Intuitive (consulting research/speaking), Research Janseen and Genome Dx. The other authors have no other conflicts of interest to declare.

Ethical Statement: The authors are accountable for all

aspects of the work in ensuring that questions related to the accuracy or integrity of any part of the work are appropriately investigated and resolved.

Open Access Statement: This is an Open Access article distributed in accordance with the Creative Commons Attribution-NonCommercial-NoDerivs 4.0 International License (CC BY-NC-ND 4.0), which permits the non-commercial replication and distribution of the article with the strict proviso that no changes or edits are made and the original work is properly cited (including links to both the formal publication through the relevant DOI and the license). See: <https://creativecommons.org/licenses/by-nc-nd/4.0/>.

References

- Guerrero S, Lopez-Cortes A, Indacochea A, et al. Analysis of Racial/Ethnic Representation in Select Basic and Applied Cancer Research Studies. *Sci Rep* 2018;8:13978.
- Chow WH, Shuch B, Linehan WM, et al. Racial disparity in renal cell carcinoma patient survival according to demographic and clinical characteristics. *Cancer* 2013;119:388-94.
- Stafford HS, Saltzstein SL, Shimasaki S, et al. Racial/ethnic and gender disparities in renal cell carcinoma incidence and survival. *J Urol* 2008;179:1704-8.
- Berndt SI, Carter HB, Schoenberg MP, et al. Disparities in treatment and outcome for renal cell cancer among older black and white patients. *J Clin Oncol* 2007;25:3589-95.
- Vaishampayan UN, Do H, Hussain M, et al. Racial disparity in incidence patterns and outcome of kidney cancer. *Urology* 2003;62:1012-7.
- Paulucci DJ, Sfakianos JP, Skanderup AJ, et al. Genomic differences between black and white patients implicate a distinct immune response to papillary renal cell carcinoma. *Oncotarget* 2017;8:5196-205.
- Go AS, Chertow GM, Fan D, et al. Chronic kidney disease and the risks of death, cardiovascular events, and hospitalization. *N Engl J Med* 2004;351:1296-305.
- Nally JV Jr. Chronic kidney disease in African Americans: Puzzle pieces are falling into place. *Cleve Clin J Med* 2017;84:855-62.
- Williams SF, Nicholas SB, Vaziri ND, et al. African Americans, hypertension and the renin angiotensin system. *World J Cardiol* 2014;6:878-89.
- Lackland DT. Racial differences in hypertension: implications for high blood pressure management. *Am J*

- Med Sci 2014;348:135-8.
11. Wilson TW, Grim CE. Biohistory of slavery and blood pressure differences in blacks today. A hypothesis. *Hypertension* 1991;17:1122-8.
 12. Antonelli A, Minervini A, Sandri M, et al. Below Safety Limits, Every Unit of Glomerular Filtration Rate Counts: Assessing the Relationship Between Renal Function and Cancer-specific Mortality in Renal Cell Carcinoma. *Eur Urol* 2018;74:661-7.
 13. Martini A, Cumarasamy S, Hemal AK, et al. Renal cell carcinoma: the oncological outcome is not the only endpoint. *Transl Androl Urol* 2019;8:S93-5.
 14. Levey AS, Stevens LA, Schmid CH, et al. A new equation to estimate glomerular filtration rate. *Ann Intern Med* 2009;150:604-12.
 15. Bellomo R, Ronco C, Kellum JA, et al. Acute Dialysis Quality Initiative w. Acute renal failure - definition, outcome measures, animal models, fluid therapy and information technology needs: the Second International Consensus Conference of the Acute Dialysis Quality Initiative (ADQI) Group. *Crit Care* 2004;8:R204-12.
 16. Chronic Kidney Disease (Partial Update): Early Identification and Management of Chronic Kidney Disease in Adults in Primary and Secondary Care. National Institute for Health and Care Excellence: Clinical Guidelines. London 2014.
 17. Krishnan B, Rose TL, Kardos J, et al. Intrinsic Genomic Differences Between African American and White Patients With Clear Cell Renal Cell Carcinoma. *JAMA Oncol* 2016;2:664-7.
 18. Kara O, Andrade HS, Zargar H, et al. Race effects on pathological and functional outcomes after robotic partial nephrectomy in a single academic tertiary care center. *J Robot Surg* 2016;10:5-10.
 19. Martini A, Cumarasamy S, Beksac AT, et al. A Nomogram to Predict Significant Estimated Glomerular Filtration Rate Reduction After Robotic Partial Nephrectomy. *Eur Urol* 2018;74:833-9.
 20. Martini A, Falagario UG, Cumarasamy S, et al. Defining Risk Categories for a Significant Decline in Estimated Glomerular Filtration Rate After Robotic Partial Nephrectomy: Implications for Patient Follow-up. *Eur Urol Oncol* 2019. [Epub ahead of print].
 21. Martini A, Sfakianos JP, Paulucci DJ, et al. Predicting acute kidney injury after robot-assisted partial nephrectomy: Implications for patient selection and postoperative management. *Urol Oncol* 2019;37:445-51.
 22. Wang JC, Lai WR, Traore EJ, et al. Racial Disparities in Histology and Short-Term Renal Functional Outcomes Following Robotic Nephron-Sparing Surgery. *Clin Genitourin Cancer* 2017;15:203-6.
 23. Lipworth L, Tarone RE, McLaughlin JK. Renal cell cancer among African Americans: an epidemiologic review. *BMC Cancer* 2011;11:133.
 24. Tripathi RT, Heilbrun LK, Jain V, et al. Racial disparity in outcomes of a clinical trial population with metastatic renal cell carcinoma. *Urology* 2006;68:296-301.

Cite this article as: Falagario UG, Martini A, Pfail J, Treacy PJ, Okhawere KE, Dayal BD, Sfakianos JP, Abaza R, Eun DD, Bhandari A, Porter JR, Hemal AK, Badani KK. Does race impact functional outcomes in patients undergoing robotic partial nephrectomy? *Transl Androl Urol* 2020;9(2):863-869. doi: 10.21037/tau.2019.09.31